

# About CorreLog, Inc.

- Privately-held, founded in 2008
- US-based; corporate headquarters in Naples, FL
- Operations: North America, South America, EMEA, APAC
- More than 1000 customers worldwide:
  - End-User, OEM, MSSP
  - All sizes: 2 - 40,000+ monitored devices
  - Governmental: DOI, US Treasury, Veterans Admin, DOD, State Governments, ...
  - Commercial: Mutual of Omaha, BCBS, very large US/UK banks, credit card companies, Tailored Brands, Motorola, ...
- Strategic Technology Partnerships with IBM, Micro Focus, McAfee, RSA, CA, ASG, Compuware, Action Software, +

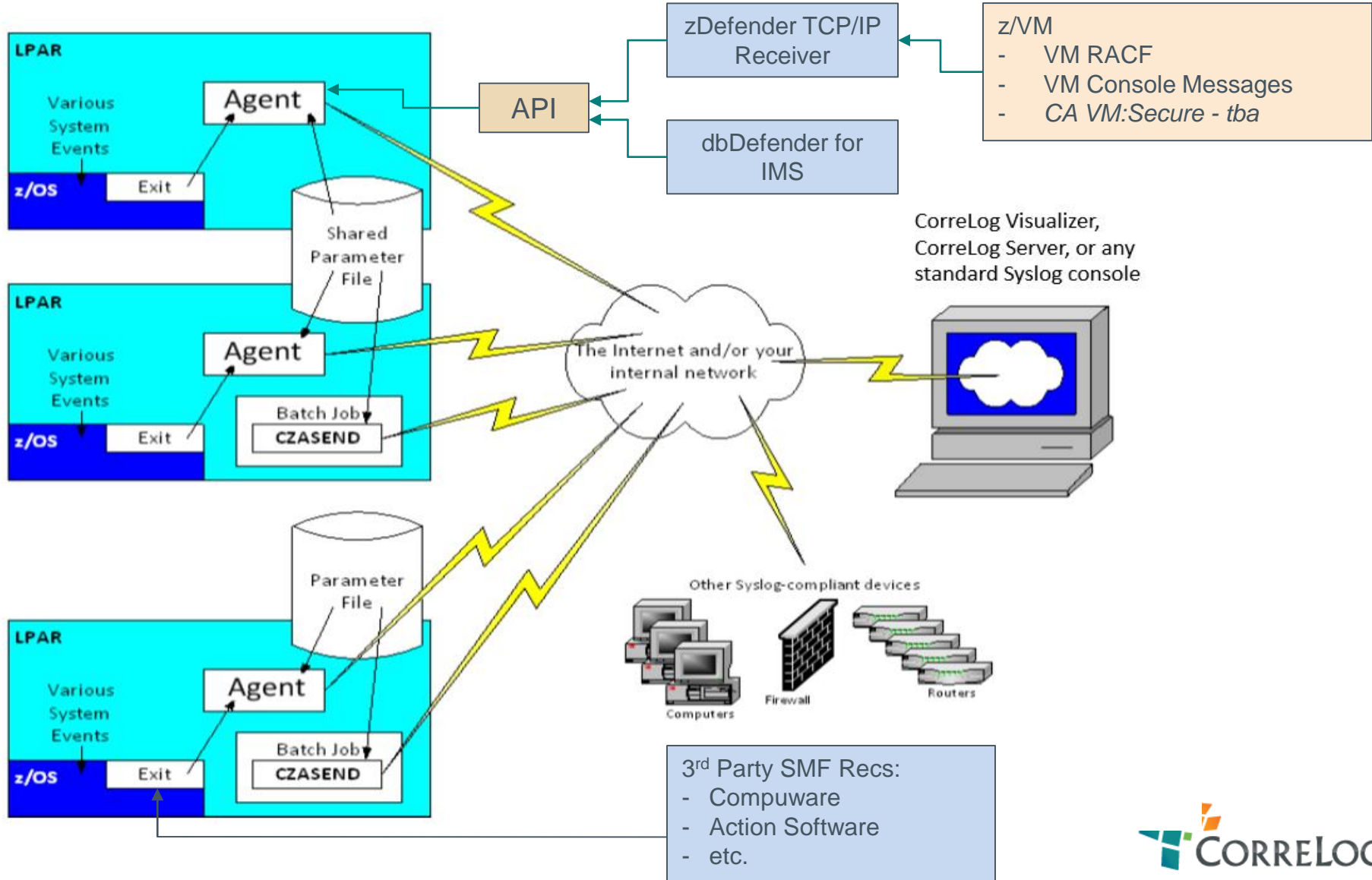


# About CorreLog, Inc.

## Our focus is multi-platform SIEM:

- Real-Time Threat Detection
- Database Activity & File Integrity Monitoring
  - Sensitive datasets: e.g. SYS1.\*, APF, RACF Levels etc.
- User/Entity Behavior Analysis
- File upload/download - FTP
- File upload/download - IND\$FILE
- IP Reputation Feeds
- Single Visualization Console for all mainframe event messages

# CorreLog zDefender for z/OS - Architecture



# Some customer volume examples:

Customer*	LPARs	Message Count	Unit Time	Mssg/Sec
A	47	60,000,000	Day	694
B	68	280,000,000	Day	3,241**

\* - two large mainframe customers

\*\* - one SIEM server instance

# Thumb Drive Content

CorreLog\_8-Guidelines-for-Mainframe-PCI-DSS-Whitepaper  
CorreLog\_11-Steps-Mainframe-Security-Whitepaper  
CorreLog\_Agent-Collector-QRadar-Executive-Summary  
CorreLog\_Case\_Study\_Mutual-Insurance-Provider  
CorreLog\_Craig S. Mullins\_Database-Access-Auditing-Whitepaper  
CorreLog\_Craig S. Mullins-Data-Access-Auditing-Requirements-Whitepaper  
CorreLog\_dbDefender for IMS-Datasheet  
CorreLog\_dbDefender-for-DB2-Datasheet  
CorreLog\_FISMA-Executive-Summary  
CorreLog\_FISMA-Whitepaper  
CorreLog\_GDPR Datasheet\_Score Card  
CorreLog\_GDPR Whitepaper  
CorreLog\_Mainframe-FIM-Whitepaper  
CorreLog\_PCI-DSS-Compliance-Guide  
CorreLog\_Splunk-Executive-Summary  
CorreLog\_Technical-Paper\_DB2  
CorreLog\_zDefender-Visualizer-Datasheet  
CorreLog\_zDefender-zOS-Datasheet  
The Anatomy of a Mainframe Hack

